

## Next-Generation Electrical Systems: A Review of AI-Enabled Technologies

Fawad Khan<sup>1\*</sup>

<sup>1</sup>Trine University, USA

[Fawadkhank313@gmail.com](mailto:Fawadkhank313@gmail.com)



### Corresponding Author

Fawad Khan

[Fawadkhank313@gmail.com](mailto:Fawadkhank313@gmail.com)

### Article History:

Submitted: 19-03-2026

Accepted: 25-04-2026

Published: 30-04-2026

### Keywords:

AI, Renewable Energy, Electrical Systems, ML, Energy Management, Cybersecurity.

**American Journal of Artificial Intelligence and Computing** is licensed under a Creative Commons Attribution-Noncommercial 4.0 International (CC BY-NC 4.0).

### ABSTRACT

This review explores the evolution of conventional electrical systems to next-generation smart networks powered by Artificial Intelligence (AI). It outlines the shift from conventional to smart, distributed systems with integration of renewable energy, Internet of Things (IoT) and communication technologies. AI technologies like machine learning and data analytics improve grid performance through predictive maintenance, monitoring, fault detection, and energy efficiency. This work also explores the use of AI in smart grids, electrical machines, and energy management, as well as issues encountered such as cybersecurity, data integrity, and interoperability. Finally, it provides an overview of future directions of sustainable energy, decentralized systems, explainable AI, and emerging technologies in modern electrical systems around the globe.

### INTRODUCTION

Artificial intelligence (AI) is playing a pivotal role in the ongoing transformation of electrical systems, signaling a shift from traditional, human-controlled systems to smart, autonomous, and self-learning systems. Historically, electrical systems have been engineered to operate with a centralized control approach, minimal sensing, and reactive maintenance [1]. These systems have been adequate for many decades, but with the growing sophistication of energy systems and the world's transition to a sustainable and efficient future, their shortcomings have become apparent. Against this backdrop, AI-powered technologies are playing a pivotal role in the evolution of next-generation electrical



systems [2].

Next-generation electrical systems are defined by their capacity to manage large volumes of data, make real-time decisions, and improve system performance without the need for ongoing human intervention. The widespread deployment of intelligent sensors, smart meters and communication networks has allowed the gathering of fine-scale data from all layers of the electrical system - generation, transmission, distribution and consumption [3]. Artificial intelligence (AI) technologies such as machine learning, deep learning, and data analytics exploit this data to increase system intelligence, ensuring predictive rather than reactive system operation.

A key use case for AI in the electricity sector is the creation of smart grids. Smart grids differ from conventional grids in their use of digital communication and smart control technologies to enhance reliability, efficiency and resilience [4]. AI techniques enable precise load prediction, real-time demand response, fault detection and self-healing, reducing outages and enhancing reliability. Moreover, the incorporation of renewable energy generation, like solar and wind, adds variability and uncertainty to the grid, which can be addressed with AI-based forecasting and optimization algorithms [5].

Beyond the grid, AI is also significantly impacting the design and optimization of electrical machines, power electronics, and energy storage devices. AI-based predictive maintenance detects potential system failures, minimizing downtime and maintenance expenses. Real-time monitoring and control systems improve efficiency, and smart energy management systems help manage energy consumption in industrial, commercial and residential applications [6]. The integration of AI in electrical systems has many benefits, it also comes with challenges. Challenges associated with data integrity, cybersecurity, interoperability, and the requirement for high-performance computing infrastructure need to be overcome to unleash the full potential of AI-based technologies [7]. In addition, the interpretability and reliability of AI models is also a key consideration, especially for safety-critical systems.

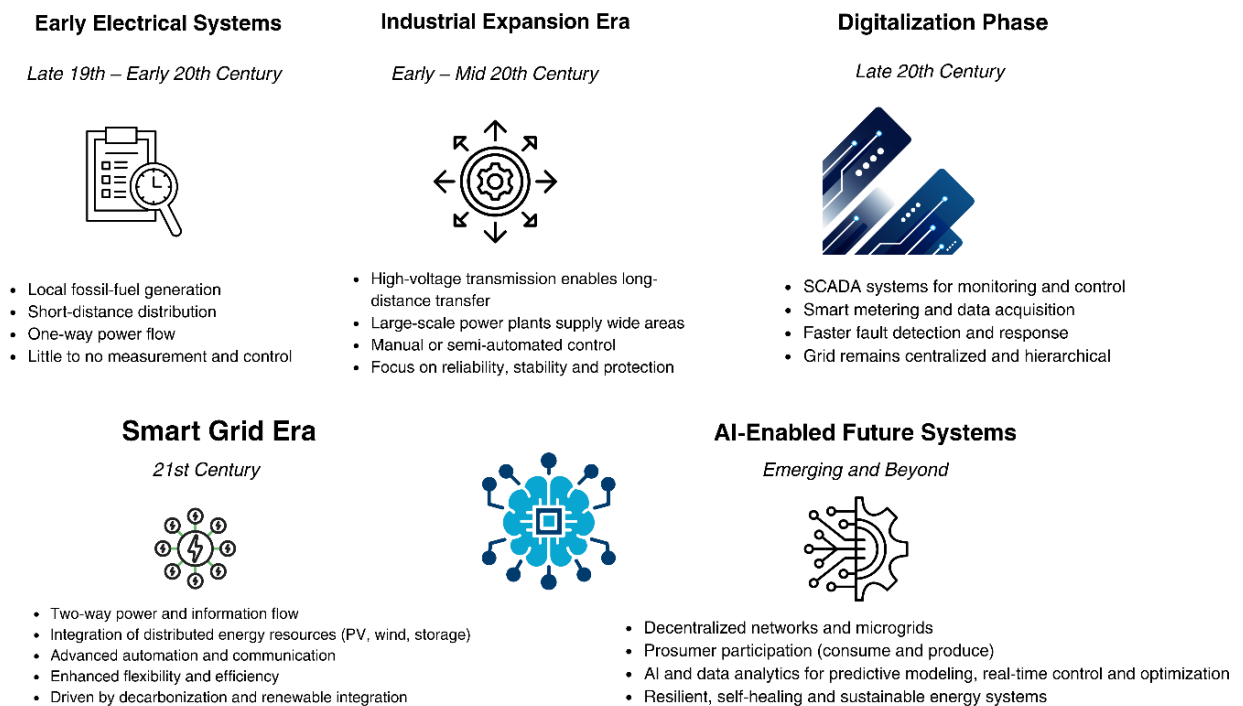
This paper seeks to provide an overview of the impact of AI on future electrical systems, including the technologies, applications, challenges, and opportunities for future research. Through an exploration of existing technologies and trends, this paper offers a holistic view of the impact of AI on innovation in electrical engineering, and its role in enabling smarter, more efficient and sustainable energy systems.

## EVOLUTION OF ELECTRICAL SYSTEMS

The history of electrical systems is marked by a relentless pursuit of enhanced reliability, efficiency, scalability and flexibility to meet increasing energy needs and technological innovations. The initial electrical systems, established in the late 19th and early 20th centuries, were simple and decentralized. Generation was primarily powered by fossil fuels and electricity was distributed to local users over short distances [8]. Electricity flowed in a one-way direction, from power plants to consumers, with little measurement and control.

### Evolution of Electrical Systems

*From centralized, inflexible grids to intelligent, resilient and sustainable energy networks*



**Figure 1.** Evolution of Electrical Systems

With the rise of industrialization and urbanization, electrical systems grew into large interconnected systems. The advent of high-voltage transmission systems facilitated power transfer over long distances, enabling large-scale power plants to serve larger areas. This era saw a focus on maintaining system stability and reliability through design redundancy and protections. But control processes were largely manual or semi-automated, with little real-time data on system operations [9].

Digitalization of electrical systems began in the late 20th century. Supervisory Control and Data Acquisition (SCADA) systems and smart metering provided enhanced monitoring and control capabilities. This allowed utilities to gather data on system operation, better detect faults, and respond to events more rapidly. However, conventional grids remained largely hierarchical and centralized,

with little flexibility to accommodate distributed energy resources or adapt to dynamic load variations [10]. Over the past few decades, smart grid technologies have revolutionized the design and operation of electrical systems. Smart grids use digital communication, automation and decentralized control to establish more interactive networks [11]. Smart grids facilitate both the generation and consumption of power, allowing for the integration of distributed energy sources, including rooftop photovoltaics, wind farming and storage technologies. This shift has also been driven by the need to decarbonise and adopt renewable energy sources [12].

Data analytics and AI technologies are helping to drive this transformation. AI helps smart grids by providing predictive modeling, real-time control and system automation. Electrical systems are evolving towards decentralization, including microgrids and prosumer models (consumers who also produce energy). These networks require advanced coordination and control mechanisms, enabled by AI and algorithms [13]. The transformation of electrical systems is a move away from inflexible, centralised systems to smart, resilient and sustainable networks. This is critical to address the challenges of the new energy system, such as growing demand, renewable energy integration, and efficiency and resilience [14].

### **BRIEF ON AI IN ELECTRICAL ENGINEERING**

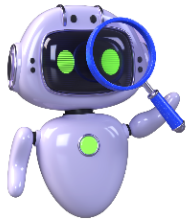
Artificial Intelligence (AI) has emerged as a key technology in electrical engineering, allowing systems to mimic human intelligence. AI is essentially a set of computational techniques enabling machines to learn from experience, identify patterns, and make decisions and predictions. In the field of electrical engineering, AI is mainly used to improve power systems, electrical machinery and energy management systems in terms of efficiency, reliability and automation [15].

A fundamental aspect of AI is machine learning (ML), where algorithms are trained to learn from data rather than being explicitly programmed. ML models are commonly used in electrical systems for load prediction, fault diagnosis, and energy consumption forecasting. These models can learn from past and present data to detect patterns and make predictions, allowing for proactive management [16]. A branch of machine learning, deep learning (DL), uses artificial neural networks with multiple layers to handle high-dimensional data. DL is well suited for applications such as image-based diagnosis, signal processing and pattern recognition in power quality assessment [17].

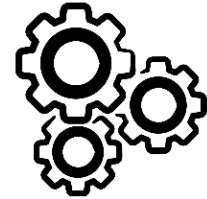
Another critical area in the use of AI in electrical engineering is data analytics. Electrical systems today produce a wealth of data from sensors, smart meters, and monitoring equipment. AI-powered data analytics methods analyse this data to extract valuable insights, optimize operations and enhance system efficiency [18]. For instance, real-time data analytics can identify abnormal patterns in power system operations and enable pre-emptive actions. Moreover, predictive analytics helps devise

maintenance policies to minimize outages and increase equipment life [19].

### Core AI Techniques

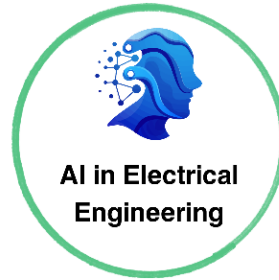


- Machine Learning (ML)**  
Learns from data to make predictions and decisions.
- Deep Learning (DL)**  
Uses multi-layer neural networks to handle complex and high-dimensional data.
- Data Analytics**  
Extracts useful insights from large-scale electrical data.



### Applications in Electrical Engineering

- Load Forecasting
- Fault Diagnosis
- Energy Consumption Forecasting
- Power Quality Assessment
- Predictive Maintenance
- Smart Grid Management



### How AI Works in Electrical Systems

- Data Collection (from sensors, smart meters, SCADA systems, PMUs)
- Data Processing (cleaning and feature extraction)
- AI Model Training & Learning (ML/DL models learn from historical and real-time data)
- Prediction & Decision Making (forecasts and automated decisions)
- Action & Control (system responses and operational control)

### Optimization & Decision Making

- Optimization techniques
- AI-based optimization
- Reinforcement Learning

### Challenges & Considerations

- Data Integrity
- Model Transparency
- Computational Power
- Security & Reliability

### Enabling Technologies

- Cloud Computing
- Edge Computing
- Internet of Things (IoT)
- Sensors & Smart Meters

**Figure 2.** AI in Electrical Engineering

Other AI methods include optimization and decision-making techniques. These are used to solve complex engineering problems such as optimal power flow, unit commitment, and energy dispatch. AI-based optimization techniques take into account various constraints and objectives to find effective solutions that enhance system efficiency [20]. Moreover, reinforcement learning, a form of AI in which systems learn through experiences, is also being investigated for dynamic control of power systems and energy systems.

The use of AI in electrical engineering systems is supported by technologies like cloud computing, edge computing and the Internet of Things (IoT). These technologies are used to gather, store and process data, allowing AI models to operate in real-time applications. Edge computing, for example, enables data processing at the edge of the network, which helps to minimise delays and enhance responsiveness in time-sensitive applications [21].

Despite these benefits, the use of AI in electrical engineering must take into account issues related to data integrity, model transparency and computational power. Reliability, interpretability and security are critical considerations, particularly in safety-critical systems such as power systems. The basics of AI in electrical engineering include a variety of techniques and tools that are revolutionizing

electrical system design, operation and maintenance [22]. Through the use of machine learning, deep learning, and data analytics, AI allows for more intelligent, efficient, and reliable electrical systems, propelling innovations in this sector [23].

### AI-ENABLED SMART GRIDS

AI-powered smart grids are a significant improvement to conventional electrical grids through the incorporation of smart technologies, communication technologies and automatic control measures. Smart grids differ from traditional grids, which are based on unidirectional electricity flow from power plants to customers, by allowing two-way communication and energy flow between utilities and consumers. The integration of artificial intelligence (AI) adds to the capabilities by allowing data-driven analytics, predictions, and automatic management of the system [24].

A smart grid's capabilities are enabled by a modernized architecture incorporating advanced metering infrastructure (AMI), distributed energy resources (DERs), communication networks and control systems. Data from these components are analyzed by AI algorithms to enhance grid efficiency and reliability [25]. For example, smart meters track energy consumption and send the data to control centers, where AI models are used to predict demand patterns and adjust energy supply. This helps better manage demand side and minimize energy losses [26].

Load forecasting and demand response is a key application of AI in smart grids. Load forecasting is crucial for managing supply and demand. AI technologies, especially machine learning algorithms, can consider past usage patterns, weather forecasts, and user preferences to accurately forecast future demand. This information can be used to implement demand response measures to shift consumption, either by providing incentives for users to shift demand during peak hours or by remotely controlling smart appliances [27]. This not only improves grid stability but also decreases the reliance on costly peak power plants.

Self-healing and fault detection are also key benefits of AI-driven smart grids. In conventional grids, faults are typically detected through visual inspections and manual intervention, resulting in extended downtimes. However, AI systems can identify faults in real time through the analysis of voltage, current and frequency. When a fault occurs, the system can automatically disconnect the faulty section and redirect energy, ensuring efficient and timely restoration. This self-healing capability enhances grid stability and reliability [28].

AI is also vital in the integration of renewable energy. Renewable energy sources such as solar and wind power are intermittent and weather-dependent. AI models can predict generation and help manage the dispatch of this energy, providing reliable and efficient energy services. AI optimizes energy storage by predicting the best times to charge and discharge storage based on demand forecasts

[29]. Unlocking the full potential of AI-enabled smart grids can be challenging due to cybersecurity, privacy issues, and high infrastructure costs. It is also necessary to ensure compatibility between different technologies and transparency of the system [30]. AI-enabled smart grids are revolutionizing the electrical power industry, making it smarter, more efficient, and more resilient. These systems overcome many shortcomings of conventional grids and are enabling the shift towards a more sustainable and resilient energy system, thanks to data analytics, automation, and real-time control [31].

### **RENEWABLE ENERGY INTEGRATION WITH AI**

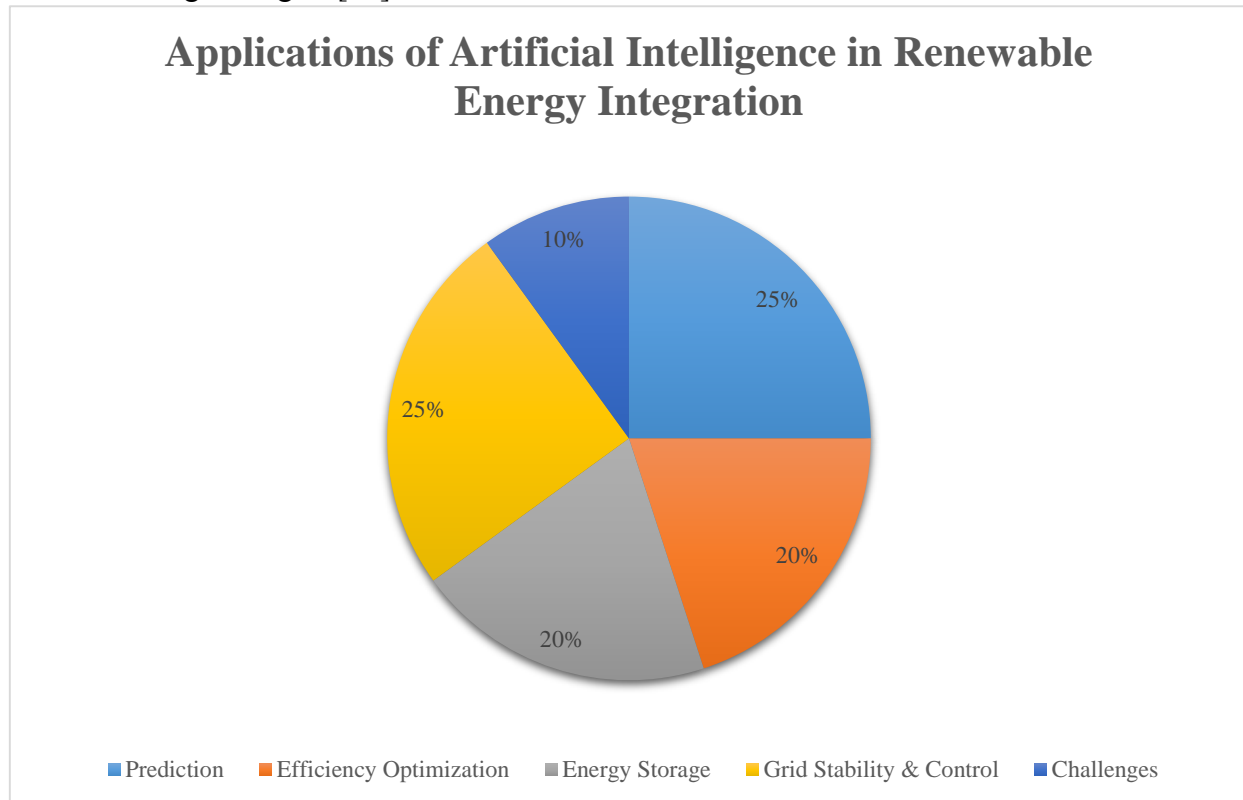
The integration of renewable energy sources into next-generation electrical systems is a global priority in view of climate change, environmental concerns, and dwindling fossil fuel resources. Solar and wind energy are clean and plentiful sources of energy but their variable and intermittent nature poses problems for grid stability and power management [32]. Artificial Intelligence (AI), can play a vital role in overcoming these barriers and facilitating the integration of renewable energy into future electrical systems.

A key application of AI in renewable energy is prediction. Solar radiation and wind speed forecasts are crucial for predicting the output of solar cells and wind generators. Machine learning and deep learning models use historical weather patterns, satellite images and real-time environmental variables to make predictions. These forecasts enable energy dispatchers to better schedule power generation, balance supply and demand, and minimise the need for fossil fuel-based backup power [33].

AI also helps to increase the efficiency of renewable energy systems. In solar systems, AI techniques are used to calculate the ideal panel orientations and solar tracking to capture sunlight throughout the day. For wind turbines, AI algorithms control the turbine by dynamically adjusting the turbine blades and rotation speeds in response to wind speed. Such smart control techniques enhance efficiency and productivity [34]. AI also plays a crucial role in energy storage for renewable energy systems. Renewable energy sources have variable power outputs, and energy storage technologies like batteries are needed to store surplus energy and discharge it when renewable energy production is insufficient [35]. AI algorithms can optimize storage operations based on demand, forecasts and prices. This optimizes energy storage usage, minimizes energy wastage and improves grid stability [36].

Moreover, AI aids in grid stability and control with high renewable energy penetration. Renewables' variable nature can lead to voltage and frequency fluctuations, which can impact grid stability. AI-based control strategies can rapidly identify such variations and take corrective measures. For

instance, AI can orchestrate distributed energy resources, curtail load or trigger energy storage to keep the grid operating smoothly [37]. AI also supports the incorporation of decentralized renewable energy sources, like rooftop photovoltaic and small-scale wind. These distributed resources need sophisticated control and coordination, which AI can offer with smart algorithms and decentralized decision-making strategies [38].



**Figure 3.** Applications of Artificial Intelligence in Renewable Energy Integration

AI offers advantages, challenges in incorporating it with renewable energy systems include data quality, model accuracy and cybersecurity. But these challenges are being continually resolved through improving AI technologies and infrastructure. AI greatly helps integrate renewable energy into electric systems by offering predictions, optimizations, and energy storage and grid stability. This is critical to the development of a sustainable, efficient and resilient energy system [39].

### SMART OPERATION AND CONTROL OF POWER SYSTEMS

Power system operation and control is becoming more challenging as electricity demand continues to grow, renewable energy penetrates the grid, and distributed energy resources become more prevalent. Conventional control approaches, which are largely based on rule-based and manual control, are not adequate to optimise such complex and large-scale systems [40]. In this evolving landscape, Artificial Intelligence (AI) is heralding a new era of smart, adaptive and autonomous power system operation and control.

A prime example of AI in power system operation is predictive maintenance. Traditional maintenance approaches are often based on regular schedules or reactive maintenance, which may result in excessive costs or unexpected breakdowns. AI-based predictive maintenance employs machine learning techniques to process historical and real-time data from sensors embedded in equipment like transformers, circuit breakers and generators [41]. These algorithms detect patterns and anomalies in the data, enabling them to forecast when a failure might happen and to schedule maintenance accordingly. This minimizes outages, prolongs the life of equipment and enhances system efficiency [42].

AI also plays a crucial role in real-time monitoring and automation. Power systems today are equipped with numerous sensors and monitoring equipment that produce vast amounts of data. AI technologies are used to analyse this data in real time to monitor system state, detect faults and automatically take corrective measures [43]. For instance, in the event of a sudden voltage dip or line congestion, AI-powered control systems can rapidly redistribute power flows, switch in additional resources, or disconnect faulty elements. Such automation minimizes human involvement and speeds up the response to disturbances, improving system stability [44].

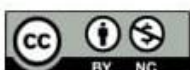
Another critical aspect of smart control of power systems is energy efficiency. AI methods can be used to study demand patterns, operating constraints, and other environmental factors to improve the generation, transmission and consumption of electricity. For example, AI can develop the optimal schedule for dispatching power from various generators, considering factors like cost, availability and environmental considerations [45]. In commercial and industrial applications, AI can be used to manage electrical equipment in order to reduce energy usage while still delivering the required services.

AI is also being increasingly applied in advanced control methods like optimal power flow and adaptive control. These approaches enable the system to adapt to changing operating conditions, maintaining optimal operation. Reinforcement learning, a type of AI, shows significant potential here as it allows the system to learn and adapt to varying conditions to make better decisions [46].

However, issues like data quality, computational needs and security need to be overcome for effective implementation. Intelligent operation and control through AI is crucial to address the challenges of next-generation power systems. AI facilitates predictive maintenance, real-time automation, and energy efficiency, increasing the efficiency, reliability and flexibility of electrical systems [47].

### **AI IN ELECTRICAL MACHINES AND DRIVES**

Electrical machines and drives are essential elements in industrial, commercial and residential systems, and are vital for energy conversion and movement control. Such systems include motors,



generators and power electronic drives, which are used in manufacturing, transportation, robotics, and domestic appliances, among others. As the need for efficiency, reliability and automation grows, incorporating Artificial Intelligence (AI) into electrical machines and drives has become a disruptive solution to improve their efficiency and intelligence [48].

A key use of AI in electrical machines is for condition monitoring. Electrical machines can experience a range of faults, such as insulation breakdown, bearing faults, rotor malfunctions, and thermal issues. Conventional methods of monitoring may involve regular inspections or basic threshold-based alarms that might miss early faults [49]. AI condition monitoring systems employ machine learning techniques to process data from sensors that measure factors like vibration, temperature, current and voltage. AI can learn the patterns and anomalies in the data and detect faults in their early stages, allowing for timely corrective actions and avoiding catastrophic failure [50].

Fault diagnosis is a related technique to condition monitoring, and it too benefits from the use of AI. Sophisticated AI models, such as deep learning algorithms, can accurately identify various fault types. For instance, neural networks can learn complex features from motor currents or vibration signals to detect specific fault modes. This accuracy enhances maintenance approaches and minimizes outages, which is crucial in critical industrial sectors where continuous operation is vital [51].

Another significant advantage of using AI in electrical machines and drives is performance optimization. Real-time control parameter optimization by AI algorithms ensures that the system operates efficiently across different loads and operating conditions. For example, in electric motor drives, AI can control speed, torque and voltage to ensure maximum energy efficiency while delivering the required performance [52]. This is especially important in variable speed motor drives, where conditions are dynamic. Through ongoing learning from the system's operation, AI can refine control algorithms to increase efficiency and save energy [53].

AI can also be used for predictive maintenance in electrical machines, as with power systems. By predicting potential issues based on past and current performance, AI allows for predictive maintenance. This helps minimize maintenance expenses and increase equipment life. In addition, AI enables electrical drives to be connected with smart and automated systems, such as industrial automation and robotics. Smart drives can interact with other system elements, learn from experience, and work autonomously, enabling the creation of smart factories [54].

However, there are challenges in data acquisition, computational efficiency and model development. Transparency and reliability of AI systems is also key, especially in safety-critical systems. AI applications in electrical machines and drives improve condition monitoring, fault detection, performance enhancement and predictive maintenance [55]. This leads to more efficient, robust and

smart electrical systems, which helps advance the next generation of technologies.

### **THE INTERNET OF THINGS (IOT) AND AI IN ELECTRICAL SYSTEMS**

The advent of the Internet of Things (IoT) and Artificial Intelligence (AI) has revolutionized electrical systems, bringing greater connectivity, monitoring and smarter decision-making. IoT is a network of physical objects that are embedded with sensors, software and communication technologies that enable them to exchange data. By integrating AI, these systems become smart systems able to process data, make predictions and automate control in electrical systems [56].

The use of smart sensors and devices is one of the significant applications of IoT in electrical systems. These sensors are deployed at different points along the power system, such as transmission lines, substations, transformers and consumer devices. They constantly measure electrical parameters including voltage, current, frequency, temperature and power flow [57]. The information gathered is sent via communication networks to centralized or decentralized data processing centers for analysis by AI algorithms. This real-time data stream provides better monitoring and control of the electrical system [58].

Edge computing is vital in improving the performance of electrical systems using IoT. Rather than transmitting data to the cloud, edge devices handle data processing on-site, minimizing delays and enhancing responsiveness. This is crucial for applications like fault diagnosis and real-time protection. Edge-based AI models can detect anomalies and initiate real-time responses, enhancing system performance and preventing failures [59]. Telecommunication technologies are also important in IoT-enabled electrical systems. High-speed communication technologies and wireless protocols like 5G, Zigbee and LoRaWAN facilitate efficient data transmission. These enable the creation of smart grids, smart homes, and industrial automation systems, which rely on effective communication for coordination [60].

AI technologies complement IoT electrical systems to provide predictive capabilities, automation, and decision making. For instance, AI can use data from smart meters to forecast energy demands and manage energy supply. In manufacturing, AI can track machinery performance and plan maintenance in advance of breakdowns. In smart buildings, AI algorithms can optimise lighting, temperature and ventilation to enhance efficiency and comfort [61]. IoT and AI also enable the creation of distributed and flexible energy systems. Decentralized energy sources, like rooftop photovoltaic and electric vehicle charging points, can be optimally managed through smart coordination and communication. This improves grid resilience and facilitates the shift towards renewable energy systems [62].

However, the use of IoT and AI in electrical systems is not without challenges, including security

vulnerabilities, privacy concerns, and the need for interoperability standards. The security and reliability of interconnected devices is essential to avoid cyber intrusions and disruptions [63]. The integration of IoT and AI is transforming electrical systems with smart sensing, communication and control. This combination results in more efficient, resilient and optimized electrical systems, which are essential components of future smart energy systems [64].

### **CYBERSECURITY IN AI-BASED ELECTRICAL SYSTEMS**

With the transition towards highly digital, networked, and AI-powered electrical systems, cybersecurity is a major issue. Contemporary electrical systems, particularly smart grids and IoT-integrated electrical systems, heavily depend on the exchange of data between sensors, control rooms, distributed energy storage systems, and user appliances [65]. This enhances their efficiency and intelligence, but also exposes them to potential cyber-attacks. Thus, cybersecurity for AI-enabled electrical systems needs to be maintained for reliability, stability and safety of the public [66].

A major cybersecurity issue in AI-based electrical systems is the expanded attack surface. Unlike conventional power systems, which were relatively isolated and less connected to the internet, smart grids and IoT-based systems are highly connected. This exposure increases their vulnerability to cyber attacks such as data tampering, denial-of-service (DoS) attacks, ransom ware and unauthorized access. These can affect power supply, lead to power outages, or result in wrong operational decisions by AI algorithms [67].

The integrity of data is also a critical issue. AI models rely on large datasets of high-quality data for decision-making processes. By injecting faulty information into the system, attackers can trick the AI system to make wrong predictions and control decisions. Such data poisoning attacks can have a detrimental impact on system stability. It's important to maintain data integrity and authenticity through secure protocols and encryption [68]. AI can also be leveraged to improve cybersecurity in electrical systems. Machine learning techniques can be used to identify abnormal network traffic patterns and potential threats. These machine learning-based intrusion detection systems adapt to system operations and learn to detect new cyber-attacks [69]. Also, anomaly detection methods can detect unusual behavior in the system that may signal cyber-attacks or hardware malfunctions.

Access control and authentication is another crucial element of cybersecurity for AI-based electrical systems. Robust authentication techniques, including multi-factor authentication and certificates, ensure that only trusted users and devices are granted access to critical systems. Access based on user roles also ensures that users only have the necessary permissions, preventing insider attacks [70].

Although these measures are effective, securing AI-powered electrical systems can be complex because of challenges in adapting legacy infrastructure to digital technologies. Moreover, AI models

can be susceptible to adversarial attacks, in which deliberately crafted inputs can fool machine learning algorithms [71]. Transparency, robustness and explain ability of AI models are therefore essential in such critical applications. Cybersecurity is crucial for safeguarding AI-powered electrical systems from cyber attacks. Through the integration of state-of-the-art security solutions, AI-based cybersecurity and system design, future power systems can be protected to secure their safe, reliable and seamless operation [72].

### CHALLENGES AND LIMITATIONS

While there have been tremendous strides in the development of Artificial Intelligence (AI)-powered electrical systems, there are still challenges and limitations in deploying these systems at large scale. These stem from technical, economic, operational and regulatory factors, which must be overcome for the successful and efficient roll-out of future electrical systems [73]. Data quality and availability is a major concern. AI algorithms require access to high-quality, high-resolution, and timely data for effective operation. However, data in many electrical systems can be inaccurate, uncertain, delayed or partial due to sensor and communication constraints. Data quality issues can result in inaccurate forecasts, unreliable controls, and sub-optimal system performance [74]. Moreover, data integration from various sources, including smart meters, IoT devices and existing legacy systems, is challenging because of differing formats and standards.

The computational and infrastructure demands of AI systems is another significant constraint. Sophisticated machine learning and deep learning algorithms can be computationally intensive and require substantial storage, particularly for large power systems. This means that powerful computing resources, cloud computing platforms or edge computing devices are required, which can be expensive to operate. In developing countries or small utilities, this may pose a significant barrier [75].

Another challenge is system stability and transparency. Many AI models, especially deep learning models, are known as "black boxes" due to their imperviousness to human understanding. This can undermine confidence in operators and engineers in safety-critical applications like power system operation and fault protection. So ensuring explainable AI (XAI) is crucial to enhance trust and adoption of these systems in electrical systems [76]. Cybersecurity and privacy issues also affect the adoption of AI-powered electrical systems. As noted previously, enhanced connectivity introduces cybersecurity risks and the large amount of data collected about users and system operations raises privacy and data protection concerns [77]. Data security in terms of secure communication, storage and processing is critical to avoid data integrity issues and data tampering.

Another considerations is interoperability, as electrical systems increasingly involve the integration

of various technologies, platforms and devices from different vendors. Inconsistencies in communication standards and system designs can result in interoperability problems, hampering the integration of AI technologies into the grid. Cost and regulatory issues can also be problematic. Upgrading infrastructure, installing smart devices and deploying AI systems can be costly. And regulatory policies in many jurisdictions are still developing and may not fully embrace AI-enabled electrical technologies [78].

Although AI-based electrical systems promise to bring great advantages, their deployment is limited by issues of data quality, computational requirements, interpretability, cybersecurity, interoperability and cost. Overcoming these challenges will be critical in unlocking the potential of smart, next-generation power systems [79].

### **FUTURE TRENDS AND RESEARCH DIRECTIONS**

The next frontier in AI-powered electrical systems is likely to be influenced by the rapid pace of technological development, growing energy consumption, and the shift towards sustainable and decentralized energy systems. The advancement of Artificial Intelligence (AI) technologies will further enhance the integration of AI in electrical systems, leading to new innovations in system design, operation and management [80]. There are a number of major trends and areas of research that are likely to shape the future of smart electrical systems.

A key trend is the rise of decentralized and distributed energy systems. Micro grids, virtual power plants, and presume energy models are becoming more prevalent, in which consumers are also producers. AI will be crucial in managing these distributed energy resources to efficiently produce, store and use energy in real time. Research will likely concentrate on novel algorithms for decentralized decision making and coordination among connected energy systems [81].

There will also be a focus on explainable and reliable AI. As AI systems are increasingly used in power system operations, it is crucial that they are transparent, interpretable, and reliable. The research community is developing tools for explainable AI (XAI) to help engineers and operators interpret decisions. This will increase confidence in AI systems and enable their use in critical applications such as power system protection and control [82]. Future progress is also likely with the integration of AI with other technologies like 5G/6G, edge computing, and block chain. This will facilitate quick data transmission and real-time control, and edge computing will enable data processing at the edge of the network, minimizing delays. Block chain could be employed to improve security, traceability and peer-to-peer transactions in decentralized systems [83].

Another emerging technology is reinforcement learning and self-adaptive control systems. These systems allow electrical systems to learn about their surroundings and respond to changes

autonomously. These technologies can be used for self-healing, grids, adaptive protection, and energy management. There is a need for ongoing research to enhance the stability, scalability and safety of these autonomous systems [84]. Energy efficiency and sustainability will continue to be a focus. Machine learning will play a growing role in integrating renewable energy, energy loss reduction, and minimizing the carbon footprint. Sophisticated forecasting techniques, energy storage management and carbon emissions monitoring will be critical [85].

The creation of digital twins, virtual models of physical electrical systems, is becoming an important tool for testing, monitoring and optimizing electrical systems. AI-powered digital twins can simulate system responses, experiment with different scenarios, and support decision-making without compromising system operation. The future of AI-powered electrical systems is decentralized, transparent, integrated, and sustainable [86]. Future research in these directions will help address current challenges and enable the realization of new intelligent, resilient and efficient electrical systems.

## CONCLUSION

The transition of electrical systems from traditional, centralized systems to smart, AI-powered systems represents a paradigm shift in electrical engineering. This overview has shown how the incorporation of Artificial Intelligence (AI) is revolutionizing all aspects of contemporary electrical systems, including generation, distribution, and operation, control, and user interaction. Through the use of cutting-edge computational methods like machine learning, deep learning, and data analytics, the next generation of electrical systems are becoming more efficient, reliable, robust, and sustainable.

One of the overarching themes is the shift towards smart grids and distributed energy systems. Smart grids powered by AI have delivered real-time monitoring, predictive maintenance, fault detection, and self-healing, improving the reliability and efficiency of the system. AI has also made it possible to better integrate renewable energy sources such as solar and wind power, through forecasting, optimization and energy storage control strategies, and overcoming issues of variability. Moreover, smart control methods have enhanced power system efficiency by facilitating real-time decision-making and adaptive responses to system conditions.

AI-based technologies have also been applied in electrical machines, drives and IoT-based systems. These technologies allow for accurate monitoring, diagnosis and optimization of operation, leading to minimized downtime and enhanced efficiency. Simultaneously, the integration of IoT and AI technologies has enabled efficient communication and coordination between different system elements, enabling the development of smart and responsive electrical systems.

But the use of AI in electrical systems presents challenges. Challenges in data integrity, security, processing power, and interoperability still need to be addressed. The importance of explainable AI models is especially important for reliable operation in safety-critical systems. Overcoming these challenges will require ongoing research, technological innovation, and the establishment of standards and regulations.

The future will see a shift towards distributed energy systems, self-control, and the incorporation of new technologies such as edge computing, 5G/6G data communication and digital twins. These will further increase the intelligence and adaptability of electrical systems, allowing them to respond to the growing demands of society while contributing to global sustainability efforts.

As we have seen, AI technologies are playing a critical role in reshaping electrical systems to drive smarter, resilient and sustainable energy systems for the future. Ongoing research and collaboration between different fields will be crucial to unlock the full potential of these next-generation systems.

## References

- [1]. Waris MB, Tariq F. Next-Generation Power Grids: AI-Enabled Predictive Maintenance and Energy Optimization. *NEXG AI Review of America*. 2024 Aug 3;5(1):39-54.
- [2]. Dehankar P, Das S. AI-Driven Approaches for Next-Gen Solar Cells. In *Innovations in Next-Generation Energy Storage Solutions 2025* (pp. 107-130). IGI Global Scientific Publishing.
- [3]. Awad H, Bayoumi EH. Next-generation smart inverters: bridging AI, cybersecurity, and policy gaps for sustainable energy transition. *Technologies*. 2025 Apr 1;13(4):136.
- [4]. Qazi S, Khawaja BA, Farooq QU. IoT-equipped and AI-enabled next generation smart agriculture: A critical review, current challenges and future trends. *Ieee Access*. 2022 Feb 17;10:21219-35.
- [5]. Rajaperumal TA, Columbus CC. Transforming the electrical grid: the role of AI in advancing smart, sustainable, and secure energy systems. *Energy Informatics*. 2025 Apr 16;8(1):51.
- [6]. Egbuna IK, Salihu FB, Okara CC, Olayiwola DE. Advances in AI-powered energy management systems for renewable-integrated smart grids. *World J. Adv. Eng. Technol. Sci*. 2025;15(2):2300-25.
- [7]. Tamrakar G, Shrirao NM. Next-Generation Renewable Energy Systems: Smart Integration of Solar, Wind, and Energy Storage with AI-Driven Grid Management. *National Journal of Renewable Energy Systems and Innovation*. 2025 Oct 21:17-23.
- [8]. Chelliah PR, Jayasankar V, Agerstam M, Sundaravadivazhagan B, Cyriac R. The power of artificial intelligence for the next-generation oil and gas industry: envisaging AI-inspired intelligent energy systems and environments. *John Wiley & Sons*; 2023 Dec 27.

- [9]. Raghav A. AI-Enabled Automation Framework for Next-Gen Robotic Control Systems. *Journal of Intelligent Instrumentation, Automation, and Control Systems*. 2025 Nov 19;1(1).
- [10]. Usmani UA, Sulaiman S, Watada J. Intelligent integration of IoT and cyber-physical systems: Empowering the next generation of AI-enabled smart environments. In *2024 8th International Conference on Computing, Communication, Control and Automation (ICCUBEA) 2024 Aug 23 (pp. 1-9)*. IEEE.
- [11]. Rana S. AI-driven fault detection and predictive maintenance in electrical power systems: A systematic review of data-driven approaches, digital twins, and self-healing grids. *American Journal of Advanced Technology and Engineering Solutions*. 2025 Feb 3;1(01):258-89.
- [12]. Behnam A, Azad S, Daneshvar M, Anvari-Moghaddam A, Marzband M. Artificial intelligence-enabled Internet of Things technologies in modern energy grids. In *IoT enabled multi-energy systems 2023 Jan 1 (pp. 69-86)*. Academic Press.
- [13]. Shahid A, Plaum F, Korötko T, Rosin A. AI technologies and their applications in Small-Scale Electric Power Systems. *IEEE Access*. 2024 Aug 7;12:109984-10001.
- [14]. Ding S, Bian Y, Saha T, Khan MI, Chang AY, Yin L, Xu S, Wang J. Artificial intelligence-enabled wearable microgrids for self-sustained energy management. *Nature Reviews Electrical Engineering*. 2025 Oct;2(10):683-93.
- [15]. Ponnusamy V, Vasuki A, Clement JC, Eswaran P. AI-driven information and communication technologies, services, and applications for next-generation healthcare system. *Smart Systems for Industrial Applications*. 2022 Feb 8:1-32.
- [16]. Sanjalawe Y, Fraihat S, Makhadmeh SN, Alzubi E. AI-powered smart grids in the 6G era: A comprehensive survey on security and intelligent energy systems. *IEEE Open Journal of the Communications Society*. 2025 Sep 11.
- [17]. Aundhekar DR, Agarwal S, Manikandan G, Kumar CM, Malarvizhi K. AI-Driven Smart Grid Optimization Using Deep Learning and Iot-Enabled Electrical Systems Framework. *National Journal of Antennas and Propagation*. 2026 Mar 31:60-72.
- [18]. Adeoye MB, Annankra JA, Yakin Z. AI-driven real-time diagnostics and self-correcting control schemes for next-generation nuclear energy systems. *World Journal of Advanced Research and Reviews*. 2025;27(3):1550-7.
- [19]. Islam SN. The Integration of AI in Advancing Electrical and Electronics Engineering. *Journal of Primeasia*. 2022 Dec 6;3(1):1-1.
- [20]. Cleary F, Srisa-An W, Henshall DC, Balasubramaniam S. Emerging AI technologies inspiring the next generation of E-textiles. *IEEE Access*. 2023 Jun 2;11:56494-508.

- [21]. Fawzy SM, M. Ali MK, Allam NK. Artificial Intelligence-Driven Materials Design for Next-Generation Sustainable Energy Technologies. *ACS Sustainable Chemistry & Engineering*. 2026 Mar 5;14(10):4745-61.
- [22]. Henao F, Edgell R, Sharma A, Olney J. AI in power systems: A systematic review of key matters of concern. *Energy Informatics*. 2025 Jun 2;8(1):76.
- [23]. Alao GU, Enobakhare BO, Okpoko OA, Adeoba MI, Nii-Okai E, Oladunni AO, Onyia VU. Artificial Intelligence Applications in Smart Grids and Modern Power Systems: A Comprehensive Review.
- [24]. PireciSejdiu N, Rendeovski N, Ristevski B. AI revolutionizing 5G and next-generation networks. In 2024 IEEE 17th International Scientific Conference on Informatics (Informatics) 2024 Nov 13 (pp. 331-336). IEEE.
- [25]. Şerban AC, Lytras MD. Artificial intelligence for smart renewable energy sector in Europe—smart energy infrastructures for next generation smart cities. *IEEE access*. 2020 Apr 23;8:77364-77.
- [26]. Singar MK, Suneetha K, Saraswat N, Shukla G. Artificial intelligence's role in shaping renewable energy for next-generation smart cities. In *E3S Web of Conferences 2024* (Vol. 540, p. 08014). EDP Sciences.
- [27]. Al Ridhawi I, Aloqaily M. AI-Driven Next-Generation Edge Computing: Current and Future Trends. *IEEE Network*. 2025 Jun 17.
- [28]. Cavus M, Ayan H, Bell M, Dissanayake D. Advances in energy storage, AI optimisation, and cybersecurity for electric vehicle grid integration. *Energies*. 2025 Aug 29;18(17):4599.
- [29]. Kindong T, Johansson B, Paulsson V. A systematic literature review of AI-enabled predictive analytics in smart grids. In *BIR Workshops 2024* (pp. 16-30).
- [30]. Ketjoy N, Muna YB, Kaewpanha M, Chamsa-ard W, Suriwong T, Termritthikun C. Grid-Scale Battery Energy Storage and AI-Driven Intelligent Optimization for Techno-Economic and Environmental Benefits: A Systematic Review. *Batteries*. 2026 Jan 17;12(1):31.
- [31]. Opoku JA, Adeoye MB. Harnessing AI and Robotics-Assisted Automation for Predictive Maintenance of Next-Generation Nuclear Energy Infrastructure. *Journal Of Innovative Science*. 2025 Sep 28;1(2):1-8.
- [32]. Javed A. A Survey of AI-Enabled Architectures for Next-Generation Wireless Communication Networks. Available at SSRN 5508578. 2024 Sep.

- [33]. Bakhshkandi R. Energy, Environment, and Sustainability: Emerging Technologies and AI in Energy Management. *Management Strategies and Engineering Sciences*. 2025 Nov 1;7(6):1-9.
- [34]. Nachtane M. From data to design: A brief review of artificial intelligence for next-generation hydrogen tanks. *Renewable Energy System and Equipment*. 2026 Mar 28.
- [35]. Mohammad A, Mahjabeen F. Revolutionizing solar energy with ai-driven enhancements in photovoltaic technology. *BULLET: Jurnal Multidisiplin Ilmu*. 2023;2(4):1174-87.
- [36]. Zhu J, Wen H, Fan Y, Yang X, Zhang H, Wu W, Zhou Y, Hu H. Recent advances in gas and environmental sensing: From micro/nano to the era of self-powered and artificial intelligent (AI)-enabled device. *Microchemical Journal*. 2022 Oct 1;181:107833.
- [37]. Kulkarni AR, Sharma S. Intelligent Embedded Control Architecture for Next-Generation Power Distribution Networks. *Journal of Intelligent Power Systems and Embedded Control*. 2025 Nov 17;1(2).
- [38]. Sufi F. Beyond the Sensor: A Systematic Review of AI's Role in Next-Generation Machine Health Monitoring. *Applied Sciences*. 2025 Sep 28;15(19):10494.
- [39]. Scholapurapu PK. Power Electronics for IoT-Enabled Smart Grids and Industrial Automation. DOI. 2025 Mar 31;10:9789349552111-08.
- [40]. Mishra AK, Ravinder Reddy R, Tyagi AK, Arowolo MO. Artificial intelligence-enabled edge computing: Necessity of next generation future computing system. *InIoT Edge Intelligence* 2024 Jun 4 (pp. 67-109). Cham: Springer Nature Switzerland.
- [41]. Joarder MM. Next-generation monitoring and automation: AI-enabled system administration for smart data centers. *Authorea Preprints*. 2025 Sep 19.
- [42]. Oladosu SA, Ige AB, Ike CC, Adepoju PA, Amoo OO, Afolabi AI. AI-driven security for next-generation data centers: Conceptualizing autonomous threat detection and response in cloud-connected environments. *GSC Adv Res Rev*. 2023;15(2):162-72.
- [43]. Bhuiyan SM, Chowdhury A, Hossain MS, Mobin SM, Parvez I. Ai-driven optimization in renewable hydrogen production: A review. *American Journal of Interdisciplinary Studies*. 2025 Apr 1;6(1):76-94.
- [44]. Sayed ST, Sayed K, Khamis M, Mohamed MA. AI-driven control and optimization in DC PV-wind-battery microgrids. In 2025 26th International Middle East Power Systems Conference (MEPCON) 2025 Dec 20 (pp. 1-7). IEEE.
- [45]. Mishra DP, Preyaadarshini B, Mishra K, Kumar A, Lenka RK. Advancements in smart grids: harnessing AI, IoT, and 5G integration for sustainable energy management. In 2024 IEEE 1st

- International Conference on Advances in Signal Processing, Power, Communication, and Computing (ASPCC) 2024 Dec 19 (pp. 134-139). IEEE.
- [46]. Gupta S. A REVIEW ON SMART DEVICES, NETWORKING TECHNOLOGIES AND SECURITY IN NEXT-GENERATION IOT SYSTEMS. *International Journal of Advanced Research in Computer Science*. 2025 Jul 1;16(4).
- [47]. Adewoyin MA, Adediwin O, Audu AJ. Artificial intelligence and sustainable energy development: A review of applications, challenges, and future directions. *International Journal of Multidisciplinary Research and Growth Evaluation*. 2025 Mar;6(2):196-203.
- [48]. Adewoyin MA, Adediwin O, Audu AJ. Artificial intelligence and sustainable energy development: A review of applications, challenges, and future directions. *International Journal of Multidisciplinary Research and Growth Evaluation*. 2025 Mar;6(2):196-203.
- [49]. Kumar R, Dutta J, Vamsi N, Varri US, Puthal D. Next-Generation Security in the 6G Era: The Role of AI in Safeguarding Future Networks. *IEEE Access*. 2026 Jan 1.
- [50]. Wang Z, Ogbodo M, Huang H, Qiu C, Hisada M, Abdallah AB. AEBIS: AI-enabled blockchain-based electric vehicle integration system for power management in smart grid platform. *IEEE Access*. 2020 Dec 14;8:226409-21.
- [51]. Soundappan SJ. Next Generation AI Enabled Holistic Cognitive Platform for Secure Cloud Network Intelligence Enterprise Systems and Digital Trust Optimization. *International Journal of Computer Technology and Electronics Communication*. 2025 Sep 17;8(5):11534-42.
- [52]. Adil M, Farouk A, Abulkasim H, Ali A, Song H, Jin Z. NG-ICPS: next generation industrial-cps, security threats in the era of artificial intelligence, and open challenges with future research directions. *IEEE Internet of Things Journal*. 2024 Oct 25;12(2):1343-67.
- [53]. Kumari S, Bhushan B, Aurangzeb K. Artificial Intelligence-Aided Next Generation Cloud Computing Networks: Need, Techniques, Usage, and Recent Advances. *Establishing AI-Specific Cloud Computing Infrastructure*. 2025:285-306.
- [54]. Sarker K. Harnessing Quantum Computing and AI for Enhanced Optimization in Renewable Energy-Driven Smart Grid Systems. *Iranian Journal of Science and Technology, Transactions of Electrical Engineering*. 2025 Nov 3:1-34.
- [55]. Zhang R, Du H, Liu Y, Niyato D, Kang J, Sun S, Shen X, Poor HV. Interactive AI with retrieval-augmented generation for next generation networking. *IEEE network*. 2024 May 15;38(6):414-24.

- [56]. Rahman F, Prabhakar CP. Sustainable Energy Futures: Green Hydrogen Integration, Internet of Energy (IoE) Architectures, and AI-Enabled Smart Grid Frameworks. *National Journal of Renewable Energy Systems and Innovation*. 2025 Oct 21:24-30.
- [57]. Tyagi AK, Tiwari S, Gupta S, Mishra AK. 6G-Enabled technologies for next generation: fundamentals, applications, analysis and challenges. John Wiley & Sons; 2025 Jan 15.
- [58]. Vimal VR. Next Generation Enterprise Architecture for SAP Cloud Systems Leveraging AI Driven Analytics and Hybrid Infrastructure. *International Journal of Engineering & Extended Technologies Research (IJEETR)*. 2025 Nov 30;7(6):11174-82.
- [59]. Kulkarni GR, Tamta MK, Kumar A, Nomani MZ, Singh C, Pallathadka H. The role of artificial intelligence (AI) in creating smart energy infrastructure for the next generation and protection climate change. In *Proceedings of second international conference in mechanical and energy technology: ICMET 2021, India 2022 Jun 27* (pp. 457-464). Singapore: Springer Nature Singapore.
- [60]. Zikria YB, Ali R, Afzal MK, Kim SW. Next-generation internet of things (iot): Opportunities, challenges, and solutions. *Sensors*. 2021 Feb 7;21(4):1174.
- [61]. Chinimilli VR, Bhansali PK, Devi JS, Ledalla S, Gade MS. AI-Enabled Tools: Shaping the Future of Technology. *EAI Endorsed Transactions on Scalable Information Systems*. 2025 Oct 1;12(4).
- [62]. Manoharan A, Sarker M. Revolutionizing cybersecurity: Unleashing the power of artificial intelligence and machine learning for next-generation threat detection. DOI: <https://www.doi.org/10.56726/IRJMETS32644>. 2023;1.
- [63]. Sharma H, Sharma G, Kumar N. AI-assisted secure data transmission techniques for next-generation HetNets: A review. *Computer Communications*. 2024 Feb 1;215:74-90.
- [64]. Al-Fatlawy RR, Rao TP, Bhariya OP, Gupta SK, Rana JM. AI-enabled dynamic spectrum sharing in next-generation networks. In *2024 IEEE International Conference on Communication, Computing and Signal Processing (ICCCS) 2024 Sep 19* (pp. 1-6). IEEE.
- [65]. Rithika A, Singh TM, Reddy CK, Doss S. Leveraging generative AI for designing next-generation haptic systems: Advancements, challenges, and applications. *Integrating AI with haptic systems for smarter healthcare solutions*. 2025:327-50.
- [66]. Idhalama OU, Oredo JO. Exploring the next generation Internet of Things (IoT) requirements and applications: A comprehensive overview. *Information Development*. 2024 Aug 1:02666669241267852.

- [67]. Karamchand G. Zero trust and AI: A synergistic approach to next-generation cyber threat mitigation. *World Journal of Advanced Research and Reviews*. 2024 Dec;24(3):3374.
- [68]. Mishra N. AI-, IoT-, and Blockchain-Enabled Renewable Energy Systems for Intelligent and Resilient Power Infrastructures. *National Journal of Renewable Energy Systems and Innovation*. 2025 Oct 21:9-15.
- [69]. Li Y. Particle swarm optimization based neural network automatic controller for stability steering control of four-wheel drive electric vehicle. *Frontiers in Mechanical Engineering*. 2024 Aug 22;10:1378175.
- [70]. Rani S, Kumar P. Deep learning based sentiment analysis using convolution neural network. *Arabian Journal for Science and Engineering*. 2019 Apr 1;44(4):3305-14.
- [71]. Simeunović J, Schubnel B, Alet PJ, Carrillo RE. Spatio-temporal graph neural networks for multi-site PV power forecasting. *IEEE Transactions on Sustainable Energy*. 2021 Nov 4;13(2):1210-20.
- [72]. Manzhos S, Carrington Jr T. Neural network potential energy surfaces for small molecules and reactions. *Chemical Reviews*. 2020 Oct 6;121(16):10187-217.
- [73]. Mehra A. Uncertainty quantification in deep neural networks: Techniques and applications in autonomous decision-making systems. *World Journal of Advanced Research and Reviews*. 2021;11(3):482-90.
- [74]. Huang CJ, Kuo PH. Multiple-input deep convolutional neural network model for short-term photovoltaic power forecasting. *IEEE access*. 2019 Jun 6;7:74822-34.
- [75]. Sirazitdinov I, Kholiavchenko M, Mustafaev T, Yixuan Y, Kuleev R, Ibragimov B. Deep neural network ensemble for pneumonia localization from a large-scale chest x-ray database. *Computers & electrical engineering*. 2019 Sep 1;78:388-99.
- [76]. Wan S, Liang Y, Zhang Y. Deep convolutional neural networks for diabetic retinopathy detection by image classification. *Computers & Electrical Engineering*. 2018 Nov 1;72:274-82.
- [77]. Taherei Ghazvinei P, Hassanpour Darvishi H, Mosavi A, Yusof KB, Alizamir M, Shamshirband S, Chau KW. Sugarcane growth prediction based on meteorological parameters using extreme learning machine and artificial neural network. *Engineering applications of computational fluid mechanics*. 2018 Jan 1;12(1):738-49.
- [78]. Kocer E, Ko TW, Behler J. Neural network potentials: A concise overview of methods. *Annual review of physical chemistry*. 2022 Apr 20;73:163-86.

- [79]. Faris H, Aljarah I, Al-Betar MA, Mirjalili S. Grey wolf optimizer: a review of recent variants and applications. *Neural computing and applications*. 2018 Jul;30(2):413-35.
- [80]. Khodabandehlou H, Pekcan G, Fadali MS. Vibration-based structural condition assessment using convolution neural networks. *Structural Control and Health Monitoring*. 2019 Feb;26(2):e2308.
- [81]. Chowdhury TK, Biswas S. Blockchain-Enabled Security Protocols Combined With AI For Securing Next-Generation Internet Of Things (IOT) Networks. *International Journal of Scientific Interdisciplinary Research*. 2021 Jun 28;2(2):98-127.
- [82]. Hang CN, Yu PD, Morabito R, Tan CW. Large language models meet next-generation networking technologies: A review. *Future Internet*. 2024 Oct 7;16(10):365.
- [83]. Shanmugapriya N, Ibragimovich SX, Rustamboyevna JM, Rakhmatullayevich RI, Khalilov A, Meylikulov S, Bakhodir I. Quantum-Inspired VLSI Architectures for Secure Cryptographic Signal Processing in Next-Generation AI-enabled hardware systems. *Journal of VLSI Circuits and Systems*. 2025;7(2):77-83.
- [84]. Ogenyi FC, Ugwu CN, Ugwu OP. A comprehensive review of AI-native 6G: integrating semantic communications, reconfigurable intelligent surfaces, and edge intelligence for next-generation connectivity. *Frontiers in Communications and Networks*. 2025 Sep 30;6:1655410.
- [85]. Mengidis N, Tsikrika T, Vrochidis S, Kompatsiaris I. Blockchain and AI for the next generation energy grids: cybersecurity challenges and opportunities. *Information & Security*. 2019;43(1):21-33.
- [86]. Ogenyi FC, Ugwu CN, Ugwu OP. A comprehensive review of AI-native 6G: integrating semantic communications, reconfigurable intelligent surfaces, and edge intelligence for next-generation connectivity. *Frontiers in Communications and Networks*. 2025 Sep 30;6:1655410.